
Rabbit Anti-Hemagglutinin Tag Recombinant Antibody

No. :KF-ab0062

- Expression Host:** Nicotiana benthamiana plants
- Clonality:** Monoclonal, recombinant
- Species and Isotype:** Rabbit IgG1
- Description:** This product is a full-length Rabbit IgG1 recombinant antibody specific to Hemagglutinin Tag (HA Tag). It was produced in Nicotiana benthamiana plants via Agrobacterium tumefaciens-mediated infiltration.
- Target Name:** Hemagglutinin Tag (HA Tag) (HA tag is derived from the HA-molecule (P03437-HEMA_I68A0) corresponding to amino acids 98-106).
- Verified Applications:** Western blot, ELISA
- Dilution Range:** Western blot (1: 1 000 - 1: 2 000) ELISA (1: 1 000 - 1: 160 000)
- Tested Species Reactivity :** Human
- Concentration :** 1 mg/ml
- Form :** Liquid
- Storage:** Short-term (up to one week): 2 - 8 ° C
Long term: Aliquot and store at - 20 ° C
Store immediately. Aliquot and avoid multiple freeze-thaw cycles.
- Storage Buffer:** 0.1 M Phosphate Buffered Saline, pH 7.8. Preservative: None
- Purification Notes:** This product was purified using Protein A- affinity chromatography.
- Purity:** \geq 95% as determined by SDS-PAGE
- General Notes:** For Research Use only, unless otherwise indicated.

Image:

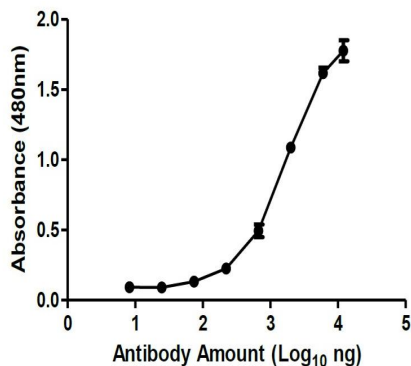


Figure 1. ELISA Dose Response curve using Rabbit Anti-HA Tag Antibody from 120 – 0,08 ng/uL to detect 70 ng HA peptide antigen. Experiments were performed in triplicate, with error bars representing standard deviation (SD).

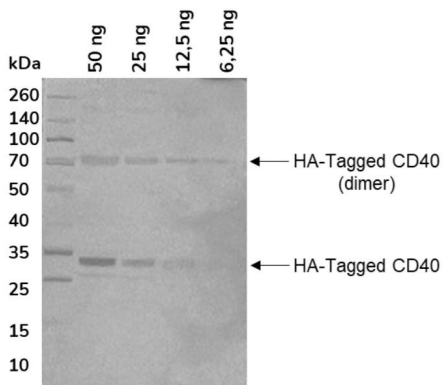


Figure 2. Western blot:decreasing amounts of HA-tagged mouse recombinant CD40 ligand (25 – 35 kDa) detected with Rabbit Anti-HA Tag at 1: 1 000 and an HRP conjugated anti-rabbit secondary antibody.