

---

## Mouse Anti-CD28 Recombinant Antibody

No. :KF-ab0035

- Expression Host:** Nicotiana benthamiana plants
- Clonality:** Monoclonal, recombinant
- Species and Isotype:** Mouse IgG2a
- Description:** This product is a full-length Mouse IgG2a recombinant antibody specific to the CD28 antigen. It was produced in Nicotiana benthamiana plants via Agrobacterium tumefaciens mediated infiltration.
- Verified Applications:** Western blot, ELISA
- Dilution Range:** Western blot (1: 1 000 - 1: 6 000), ELISA (1: 500 - 1: 8 000)
- Tested Species Reactivity :** Human
- Concentration :** 1 mg/ml
- Form :** Liquid
- Storage:** Short-term (up to one week): 2 - 8 ° C  
Long term: Aliquot and store at - 20 ° C  
Store immediately. Aliquot and avoid multiple freeze-thaw cycles.
- Storage Buffer:** 0.1 M Phosphate Buffered Saline, pH 7.4. Preservative: None
- Purification Notes:** This product was purified using Protein A- affinity chromatography.
- Purity:**  $\geq$  95% as determined by SDS-PAGE
- General Notes:** For Research Use only, unless otherwise indicated.

Image:

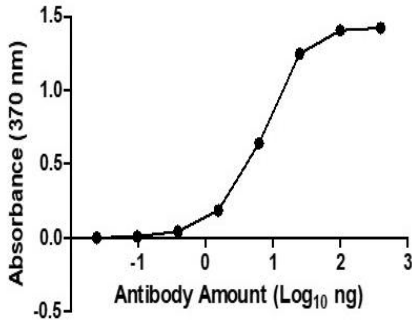


Figure 1. ELISA Dose Response curve using Mouse Anti-CD28 from 4 – 0.0002 ng/μl to detect 25 ng CD28 antigen. Experiments were performed in triplicate, with error bars representing standard deviation (SD).

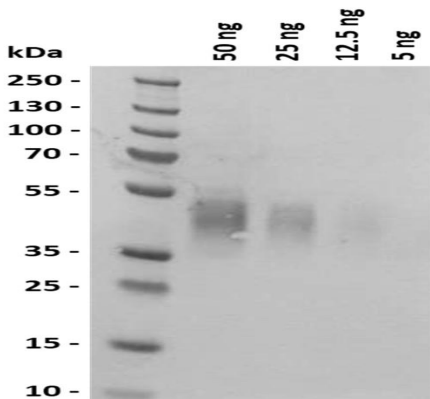


Figure 2. Western blot of decreasing amounts of CD28 Antigen (35-50 kDa) detected with Mouse Anti-CD28 at 1: 2 000 and an HRP conjugated anti-mouse secondary antibody at 1: 10 000.

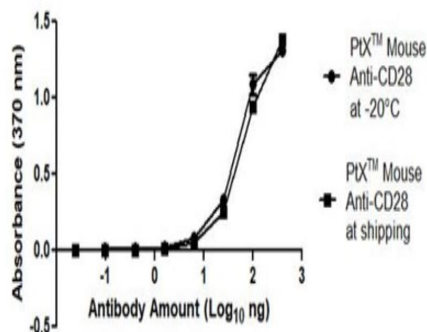


Figure 3. ELISA Dose Response curve detecting 25 ng CD28 antigen using Mouse Anti-CD28 Antibody from 4 – 0.0002 ng/μl stored at -20°C and shipping conditions for two weeks. For shipping conditions, the product is placed under conditions that simulate real time shipping conditions. Experiments were performed in triplicate, with error bars representing standard deviation (SD).