

---

## Human Anti-VEGF (HRP) Recombinant Antibody

No. :KF-ab0029

**Expression Host:** Nicotiana benthamiana plants

**Clonality:** Monoclonal, recombinant

**Species and Isotype:** Human IgG1

**Description:** This product is a full-length Human IgG1 recombinant antibody specific to VEGF, fused to HRP at the genetic level. It was produced in Nicotiana benthamiana plants via Agrobacterium tumefaciens-mediated infiltration.

**Verified Applications:** Western blot, ELISA

**Dilution Range:** ELISA (1: 1 000 - 1: 520 000)Western blot (1: 1 000 - 1: 2 000)

**Tested Species Reactivity :** Human

**Concentration :** 1 mg/ml

**Form :** Liquid

**Storage:** Short-term (up to one week): 2 - 8 ° C  
Long term: Aliquot and store at - 20 ° C  
Store immediately. Aliquot and avoid multiple freeze-thaw cycles.

**Storage Buffer:** 0.1 M Phosphate Buffered Saline, pH 7.4 Preservative: 50% Glycerol

**Purification Notes:** This product was purified using Protein A- affinity chromatography.

**Purity:**  $\geq$  95% as determined by SDS-PAGE

**General Notes:** For Research Use only, unless otherwise indicated.

Image:

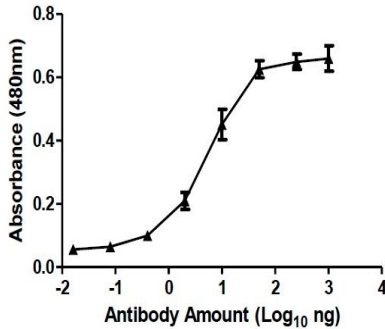


Figure 1. ELISA Dose Response curve using Human Anti-VEGF (HRP) Antibody from 0.0098 – 40.0 ng/uL to detect 3.0 ng recombinant VEGF antigen. Experiments were performed in triplicate, with error bars representing standard deviation (SD).

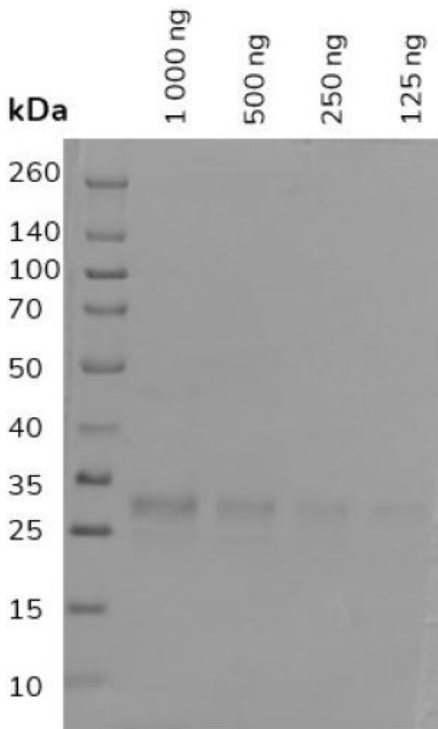


Figure 2. Western blot of decreasing amounts of Recombinant Human Vascular Endothelial Growth Factor (VEGF) (~30 kDa isoform) detected with Human Anti-VEGF (HRP) Antibody at 1: 1 000.