

---

## Human Anti-Interleukin-2 (1F90) Recombinant Antibody

No. :KF-ab0021

- Expression Host:** Nicotiana benthamiana plants
- Clonality:** Monoclonal, recombinant
- Species and Isotype:** Human IgG1
- Description:** This product is a full-length Human IgG1 recombinant antibody specific to Interleukin-2. It was produced in Nicotiana benthamiana plants via Agrobacterium tumefaciens mediated infiltration.
- Verified Applications:** Western blot, ELISA
- Dilution Range:** Western Blot (1: 500 - 1: 1 000), ELISA (1: 375 - 1: 48 000)
- Tested Species Reactivity :** Human
- Concentration :** 1 mg/ml
- Form :** Liquid
- Storage:** Short-term (up to one week): 2 - 8 ° C  
Long term: Aliquot and store at - 20 ° C  
Store immediately. Aliquot and avoid multiple freeze-thaw cycles.
- Storage Buffer:** 0.1 M Phosphate Buffered Saline, pH 7.4 Preservative: none
- Purification Notes:** This product was purified using Protein A- affinity chromatography.
- Purity:**  $\geq$  95% as determined by SDS-PAGE
- General Notes:** For Research Use only, unless otherwise indicated.

Image:

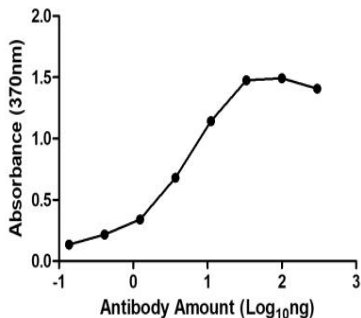


Figure 1. ELISA Dose Response curve using Human Anti-IL-2 (1F90) antibody from 3 – 0.00137 ng/μl to detect 25 ng Human Interleukin-2 protein. Experiments were performed in triplicate, with error bars representing standard deviation (SD).

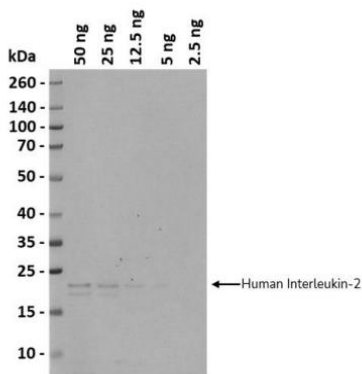


Figure 2. Western blot of decreasing amounts of Human Interleukin-2 protein (18.4 and 16.6 kDa) detected with Human Anti-IL-2 (1F90) antibody at a 1: 500 dilution and an HRP conjugated anti-human secondary antibody at 1: 10 000

Figure 3. ELISA Dose Response curve to detect 25 ng of Human Interleukin-2 protein using Human Anti-IL-2 (1F90) antibody from 3 – 0.00137 ng/μl stored at -20 °C and shipping conditions for two weeks. At shipping the product is placed under conditions that simulate real time shipping conditions. Experiments were performed in triplicate, with error bars representing standard deviation (SD).