

---

## Human Anti-Alpha Tubulin (F2C) Recombinant Antibody

No. :KF-ab0010

- Expression Host:** Nicotiana benthamiana plants
- Clonality:** Monoclonal, recombinant
- Species and Isotype:** Human IgG1
- Description:** This product is a full-length Human IgG1 antibody specific to Human Alpha tubulin protein. It was produced recombinantly in Nicotiana benthamiana plants via Agrobacterium tumefaciens mediated infiltration
- Verified Applications:** Western blot, ELISA.
- Dilution Range:** Western blot (1: 1 000 - 1: 5 000)  
ELISA (1: 1 000 - 1: 1 000 000)
- Tested Species Reactivity :** Human
- Concentration :** 1 mg/ml
- Form :** Liquid
- Storage:** Short-term (up to one week): 2 - 8 ° C  
Long term: Aliquot and store at - 20 ° C  
Store immediately. Aliquot and avoid multiple freeze-thaw cycles.
- Storage Buffer:** 0.1 M Phosphate Buffered Saline, pH 7.4 Preservative: None
- Purification Notes:** This product was purified using Protein A affinity chromatography.
- Purity:**  $\geq$  95% as determined by SDS-PAGE

**General Notes:** For Research Use only, unless otherwise indicated.

**Image:**

**Human Anti-Alpha Tubulin (F2C) ELISA Dose Response**

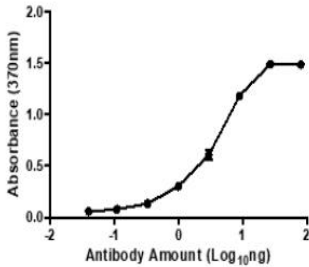


Figure 1. ELISA Dose Response curve using Human Anti-Alpha Tubulin (F2C) to detect coated Human Alpha Tubulin Antigen at 1 ng/ $\mu$ l and increasing concentrations of antibody. Experiments were performed in triplicate, with error bars representing standard deviation (SD).

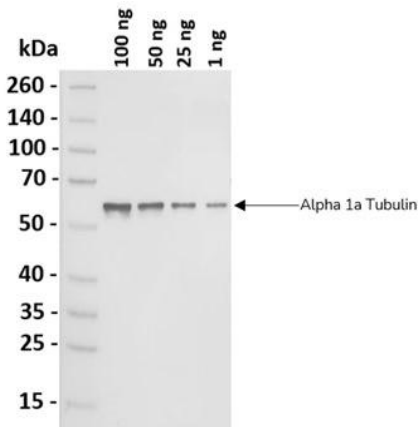


Figure 2. Western blot of decreasing amounts of Human Alpha tubulin antigen (~50 kDa) detected using Human Anti-Alpha Tubulin (F2C) at 1: 5 000.