

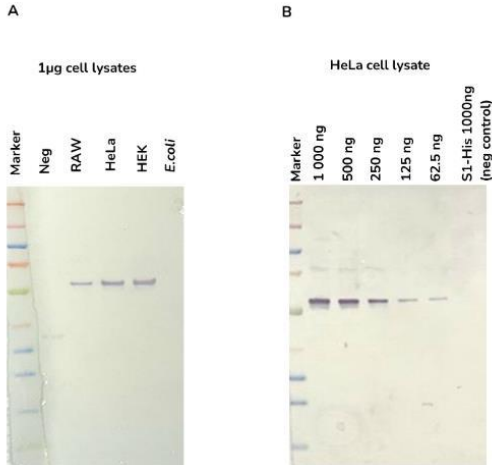
---

## Rabbit Anti-Beta Tubulin (S11B) Recombinant Antibody

Cat No. :KF-ab0001

- Expression Host:** Nicotiana benthamiana plants
- Clonality:** Monoclonal, recombinant
- Species and Isotype:** Rabbit IgG1
- Description:** This product is a full-length Rabbit IgG1 recombinant antibody specific to Beta Tubulin. It was produced in Nicotiana benthamiana plants via Agrobacterium tumefaciens-mediated infiltration.
- Verified Applications:** Western blot, ELISA
- Dilution Range:** Western blot (1: 1 000 - 1: 5 000). ELISA (end user to determine)
- Tested Species Reactivity :** Human, Mouse
- Concentration :** 1 mg/ml
- Form :** Liquid
- Storage:** Short term (up to one week): 2 - 8 ° C. Long term: Aliquot and store at - 20 ° C. Store immediately. Aliquot and avoid multiple freeze thaw cycles.
- Storage Buffer:** 0.1 M Phosphate Buffered Saline, pH 7.4. Preservative: None.
- Purification Notes:** This product was purified using Protein A- affinity chromatography.
- Purity:** 95 % as determined by SDS-PAGE. 97.67% as determined by Mass Spectrometry
- General Notes:** For Research Use only, unless otherwise indicated.

Image:



Western blot images of Rabbit Anti-Beta Tubulin used at 1: 5 000 to detect Beta tubulin protein (50 kDa) within cell lysates. A) 1 µg of various cell lysates B) Decreasing amounts (1 000 ng-62.5 ng) of HeLa cell lysates.